



Direct Line: (0115) 901 3849
Switchboard: (0115) 901 3901
Fax: (0115) 901 3758
Minicom: (0115) 901 3935
Email: peter.baguley@gedling.gov.uk
Ask for: Jenny Cole/Gareth Elliott
Our Ref: PB/GAM
Your Ref:

4 May 2010

Dear Sir/Madam

Plan No: 2010/0289
Location: Severn Trent, Stoke Lane, Stoke Bardolph, Nottinghamshire
Proposal: Erection of 2 (two) Wind Turbines plus associated equipment.

I have received an application for the above, which is also accompanied by an Environmental Statement.

The application may be inspected:

- At the Council Offices between 8.00 a.m. and 5.15 p.m. Monday to Thursday and 8.00 a.m. to 4.45 p.m. on Fridays.
- On the Council's website at <http://www.gedling.gov.uk>. Please select 'Planning' from the main menu.
- At Burton Joyce Library during their normal opening hours.

If you would like to discuss the proposal in more detail, you **MUST** arrange an appointment with either of the Planning Officers named above.

If you wish to make comments on the application then these should be received by me in writing (or by e-mail from the website), not later than **21** days beginning with the date of this letter. Failure to meet this deadline may jeopardise the chances of your comments being considered.

If you have a landlord or tenant, please show them this letter as they may also wish to comment. I should point out that objections do not automatically lead to refusal of permission: for example the Council may not be able to base its decision on matters such as loss of view, covenants or property values.

Under the Local Government (Access to Information) Act 1985), any representations submitted may be made available to the public.



Should I hear from you I will notify you of the decision of the Borough Council in due course.

Yours faithfully

A handwritten signature in black ink, appearing to read 'P Baguley'. The signature is written in a cursive style with a large initial 'P' and a long, sweeping tail for the 'y'.

Peter Baguley
Head of Planning & Environment

or the decision will be made by the Planning Committee. Under the Planning Act, applications must be approved unless there are good planning reasons for refusal. If the application is to be decided on by a planning committee, you may speak at the meeting. We publish details of how to arrange this in our 'Have your say on planning applications' leaflet.

At the planning committee, councillors must only consider the application in the light of published planning policies. This is a legal decision-making process. If your ward councillor is on the planning committee, they will be making a decision which represents the whole borough, not their ward. As a result they will be acting in a different role to that of ward representative.

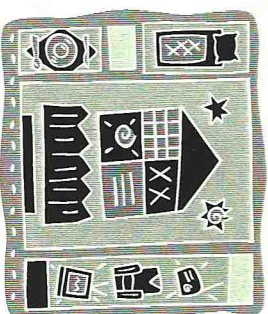
If you have sent us comments, we will let you know you if it is to be decided by the planning committee (or under delegated authority), and when and where the committee meeting will take place. For all applications, we will write and tell you the decision we have made.

Confidentiality

Your comments are not confidential and we may show them to the person applying for permission. They may also be made public on our website at www.gedling.gov.uk/index/pe-home. Please remember that comments should not include remarks that may be considered offensive or libellous (seen as untrue).

You can find a flow chart showing how the planning application process works which is available on our website at www.gedling.gov.uk

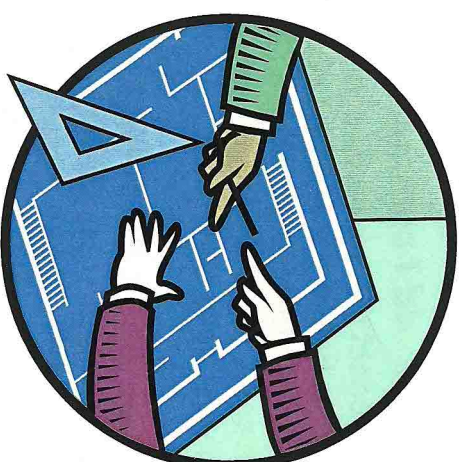
Before contacting the planning section please check the website where there is a lot of helpful information.



- You should make your objections
- in writing;
 - before the deadline shown; and
 - relate only to planning issues



How to comment on a planning application



For larger print or other formats,
please phone 0115 901 3830.

The leaflet should help you comment on planning applications and understand the process of deciding a planning application.

Who can comment on an application?

Anyone can comment, not just those who have received a letter. As a result you may want to discuss the proposal with your neighbours.

When should I comment?

It is important that we receive your comments before the deadline shown on the consultation letter. We can only consider late comments if the application has not yet been decided on.

What is being proposed?

You should try and see the application forms and plans before commenting. You can see all applications on the public access system on our website at www.gedling.gov.uk which you can also see at your local library. Or you can visit the council offices at the Civic Centre, Arnot



Hill Park, Arnold. If you have questions about the proposal, please get advice from officers by phone (0115 901 3720), e-mail (developmentcontrol@gedling.gov.uk) or go to the council offices.

How should you comment?

You should make your comments in writing by letter or e-mail. We cannot consider spoken comments on applications at this stage because we need to keep a record of all comments.



We also cannot answer questions raised on letters of objection.

In your comments, you should say which parts of the proposal you like or do not like, and give reasons why. Your comments should only relate to **planning issues**. Among other things, these may include the following.

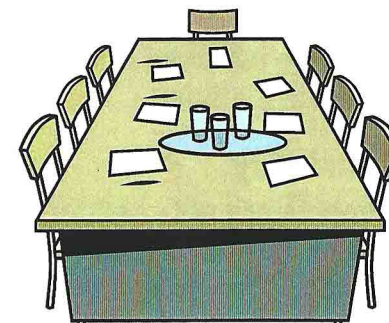
- **Use** - is this suitable for the area it is in?
- **Design** - are the height and scale of the proposal appropriate? How does it relate to nearby buildings? Are the materials suitable?

- **Parking and traffic** - are the access and parking arrangements suitable? Would the traffic created as a result be acceptable?
- **Development problems** - would the proposal affect the local community?

Non-planning matters, which we cannot consider include:

- fears about property values
- requests for Council Tax reductions and
- neighbour disputes

We will consider comments as long as they are based on planning issues. Petitions can be sent in, but it is the planning issues which we will consider, not the number of signatures. Similarly, the number of objections is not itself a factor to be considered. So making a written objection or sending us a petition does not mean that we will automatically refuse an application.



What happens next?

We will consider your comments and judge them against published planning policies. We will then make a decision under powers given to us by councillors,